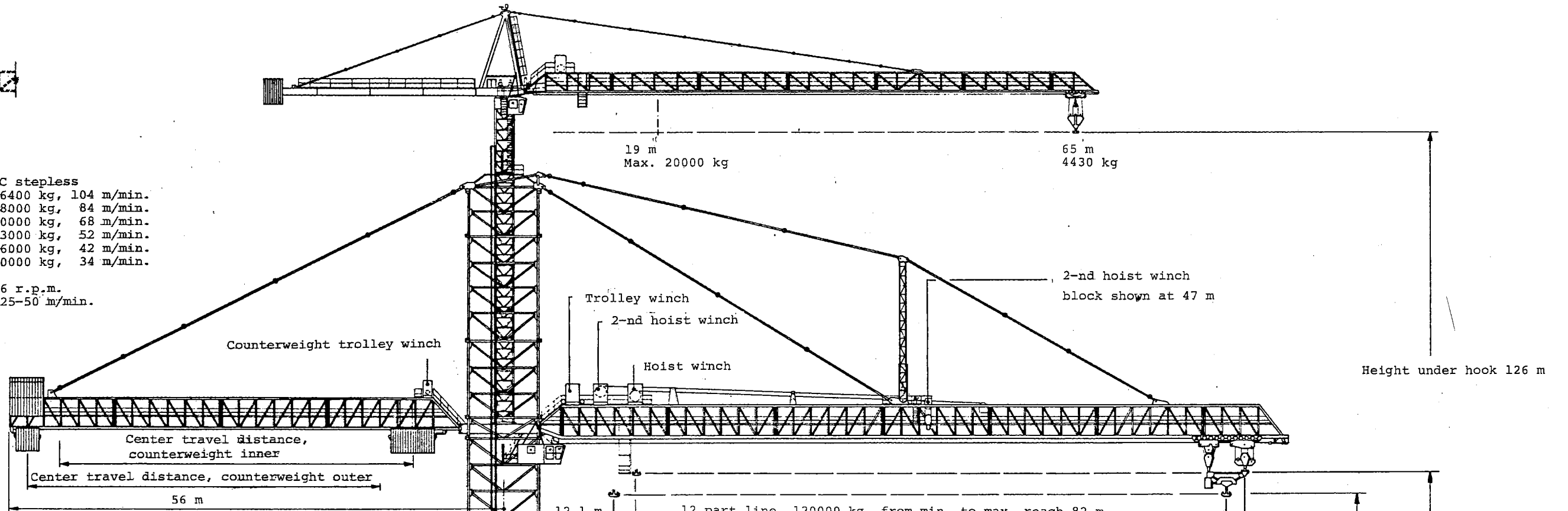


Whipline max. reach

WHIPLINE CRANE

Hoist winch 200 HP DC stepless
 2 part line 0- 6400 kg, 104 m/min.
 - 6400- 8000 kg, 84 m/min.
 - 8000-10000 kg, 68 m/min.
 4 part line 0-13000 kg, 52 m/min.
 - 13000-16000 kg, 42 m/min.
 - 16000-20000 kg, 34 m/min.

Slewing speed.....0,6 r.p.m.
 Trolley speed 6-25-50 m/min.



OPERATIONAL DETAILS

HOIST WINCHES

Single trolley : 2 part line 0- 10000 kg, 0-49 m/min.
 - 10000- 20000 kg, 0-33 m/min.
 - 6 part line 0- 30000 kg, 0-16 m/min.
 - 30000- 60000 kg, 0-11 m/min.
 Double trolley : 12 part line 0- 60000 kg, 0- 8 m/min.
 - 60000-120000 kg, 0-5,5 m/min.
 Heavy lift : 24 part line 240000 kg, 0-5,5 m/min.

TROLLEY WINCH

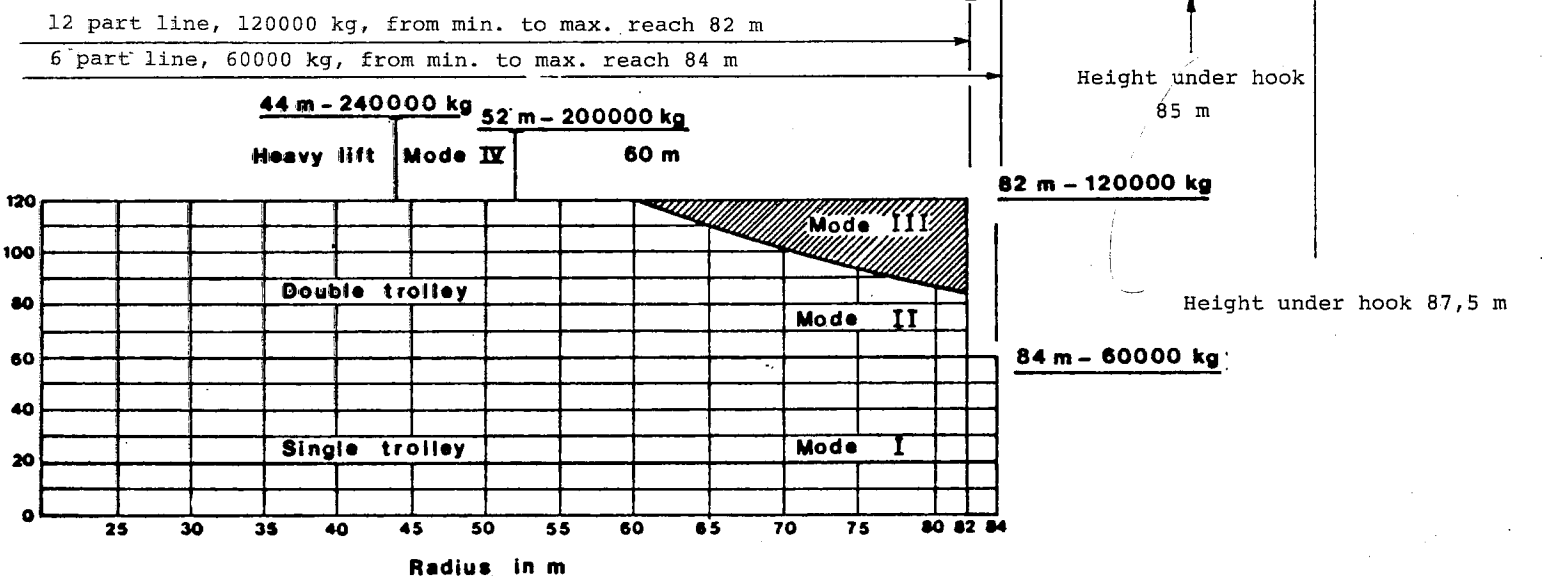
- 2 part line 0- 10000 kg, 0-90 m/min.
 - 10000- 20000 kg, 0-45 m/min.
 - 6 part line 0- 15000 kg, 0-90 m/min.
 - 15000- 30000 kg, 0-45 m/min.
 - 30000- 60000 kg, 0-30 m/min.
 - 12 part line 0- 30000 kg, 0-45 m/min.
 - 30000- 60000 kg, 0-22 m/min.
 - 60000-120000 kg, 0-15 m/min.

Slewing speed : 4 units.....0,4 r.p.m.
 Travel speed :0-8 m/min.

MACHINERY total installed HP

Hoist winch 1.....200 HP *
 Hoist winch 2.....200 HP *
 Slewing.....125 HP **
 Trolley winch.....12,5 HP **
 C/w. trolley winch.....20 HP **
 Travel (10 HP x 16).....160 HP ***

* - stepless operation via BBC "Veritron" thyristor control, dc
 ** - el. hydrostatic unit, ac 50 Hz
 *** - stepless operation, thyristor control, ac 50 Hz



OPERATION MODES OF COUNTERWEIGHT TROLLEYS

Mode I - single load trolley - both counterweight trolleys on minimum radius
 Mode II - double load trolley - outer counterweight trolley on maximum radius
 Mode III - double load trolley - both counterweight trolleys on maximum radius
 Mode IV - ultra heavy lift - both counterweight trolleys on maximum radius

(Crane in operation shut down - both counterweight trolleys in inner position).

PERSONNEL/MATERIAL HOIST

Lifting capacity.....175 kg
 Speed.....0,41 m/sec



K-10000

B-00-14772-02 LM